



POR EL CAMINO DE EN MEDIO

PRODUCED BY

ARSENIO MAYO

SCREENPLAY AND DIRECTION

ARSENIO MAYO

ART DIRECTION

BEGOÑA RIUS

PHOTOGRAPHY DIRECTION

ARSENIO BUZZ

Presentation

It is a Spanish surrealist feature film in the style of Azcona-Berlanga. Filming began at the end of October 2023 to take advantage of the autumn light and atmosphere, and almost all locations are in Carabanchel. It is driven by the cultural association THOLMA and supported by numerous cultural entities from this district such as Gruta 77, Tarambana, TuPatio, or Carabanchel Distrito Cultural, and even by the Carabanchel District Board.

On the way of the midst is a very grounded project; that's why grassroots organizations and the simplest people are the protagonists. Many of Carabanchel's cultural entities have been involved, along with over a hundred people who have fought to bring this film to the big screen, leaving a piece of our lives captured in this work that is being presented.

We request:

Collaboration in this cinematic adventure to the extent possible.

Why are we making this feature film?

Currently, Carabanchel is home to a large amount of cultural creation, making it the district in Madrid where the most culture takes place. For this reason, this production is filmed in Carabanchel, with the aim of showcasing the places, organizations, and people who live and create there.

The task of making this feature film falls to an alternative production company from Carabanchel that was founded in the 1980s in Zamora. Its status as a cultural association makes it easier to undertake this project, since it doesn't need to generate mandatory income to cover all costs. Instead, the people and entities involved in this film do so out of cultural interest, rooted in the will of a community eager to take on the world.

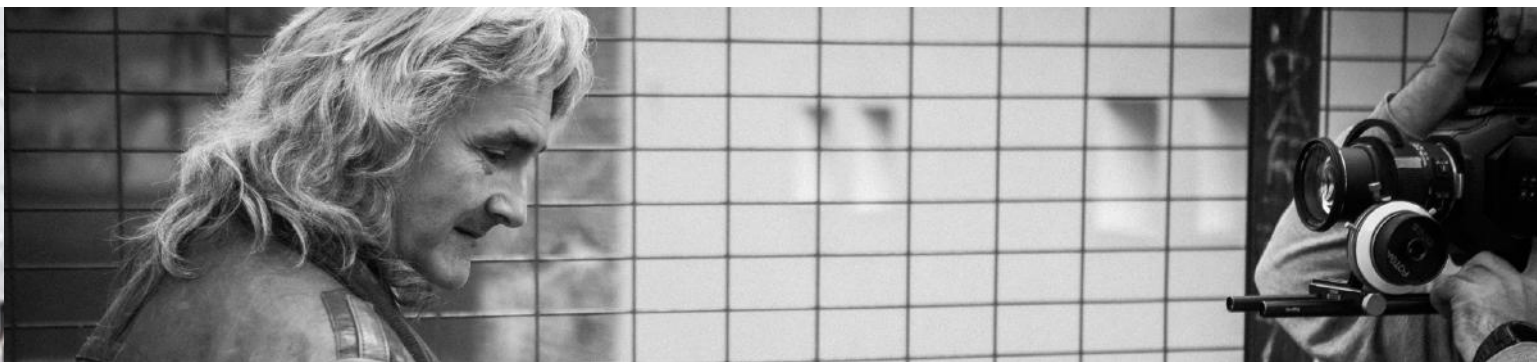
Additionally, the cultural association THOLMA has extensive experience in producing documentaries and social reports; perhaps this is where the energy needed to move forward with this project comes from. This film is not just another cinematic production, but a work with "real" content, with a special focus on everyday life, because ultimately, it's about telling our own story.

Synopsis

The protagonist is a mature man living in Carabanchel, trying to get ahead despite the constant difficulties and problems that never cease. His initial intention, as a good citizen, is to respect established rules and be useful to society. His aspiration: to enjoy a stable life. However, the reality is quite different: he only manages to find temporary jobs. He continually faces numerous barriers, especially with a public administration lacking empathy; always having to solve problems by spending an arbitrary amount of money.

In this context, the sudden death of his mother hits him very hard, as he has to face it amidst financial and emotional bankruptcy, which makes it difficult for him to move forward as he would like. This situation causes a rupture in his innermost being, leading him to consider escaping from everything at any cost. Then, unexpectedly, something unusual happens in his Carabanchel neighborhood, and that's when he decides to take the middle path...

With a dramatic tone but filled with dark humor and a touch of surrealism, this story unfolds—one that could have been told years ago and perhaps will continue to be told in the future: the fight for life of a character who faces numerous setbacks at a time when everything seems against him. As a result, he decides to openly and deliberately, yet intelligently, break the excessive laws and regulations condemning him to existential misery, as well as challenge an intolerant society that hampers his development as a person.



POR EL CAMINO DE
EN MEDIO





Ángel Jodra



Rosario Pardo



María Gracia



Pepe Carabias



Kimbo



J. Luis Cano



Marta Belenguer



Tony Antonio



Manolo Cal



Nacho Bonacho



Javier Losan



Marta S. Novo



Ángeles Afuera



Manolo Lama



J. MªAlfageme



Sylvana Velasco



Arsenio Mayo



Helena Lanza



Miguel Gila



Tony Melero



Pablo Carbonell



POR EL CAMINO DE EN MEDIO

The middle way

CONTACT ONLY IN SPANISH

ANITA WONHAM

649 70 15 00 correo@tholma.com

ARSENIO MAYO

+34 600 40 28 18 correo@tholma.com

WEB

porelcaminodeenmedio.es

